



**FAI Sailplane Grand Prix**  
World Series – XII  
**SLOVENIA** – Lesce

*LOCAL PROCEDURES*  
**Selfbriefing**

Lesce, 15.06.2024



**FAI Sailplane Grand Prix®**  
World Series - XII



**SLOVENIA**  
Lesce



## Name and location of the Event

Name: FAI Sailplane Grand Prix Slovenia 2024

Type: FAI Qualifying Sailplane Grand Prix

Organizer: Aeroclub AK ALC Lesce

Location / ICAO code : Airfield Lesce-Bled / LJBL

Coordinates: 46°21'23"N 014°10'28"E

Elevation: 504 m

Frequency: CH 122.505





## *Program / Schedule*

Arrival	from 23.06.2024
Training opportunities	24. – 29.06.2024
Scrutineering	28.06.2024 08:30 – 29.06.2024 10:00
Opening briefing	28.06.2024 at 19:00
1 <sup>st</sup> daily briefing:	29.06.2024 at 10:30
Opening ceremony and official briefing	29.06.2024 at 18:00
Competition period / daily briefing	30.06. - 06.07.2024 / 10:30
Closing and price Giving ceremony	06.07.2024 at 19:30





# Address

*Aeroklub AK ALC Lesce*

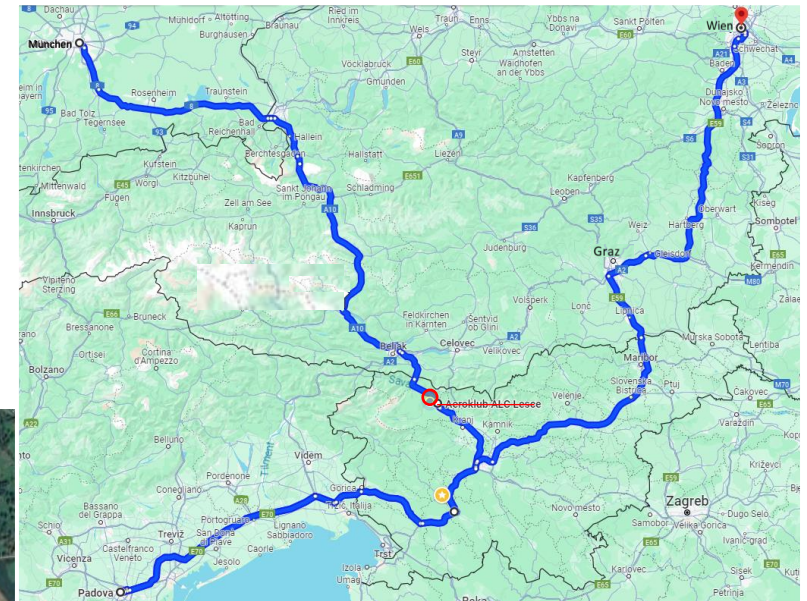
*Begunjska c.10*

*4248 LESCE*

*Slovenia*

*Phone: +386 41 60 10 74*

*Email: [sqp@alc.si](mailto:sqp@alc.si)*





# Airfield Lesce – Bled layout

## RUNWAY 14/32

Dimensions:

Grass: 600 x 30 m,

Asphalt: 1130 x 23 m,

**Elevation 504 m AMSL**

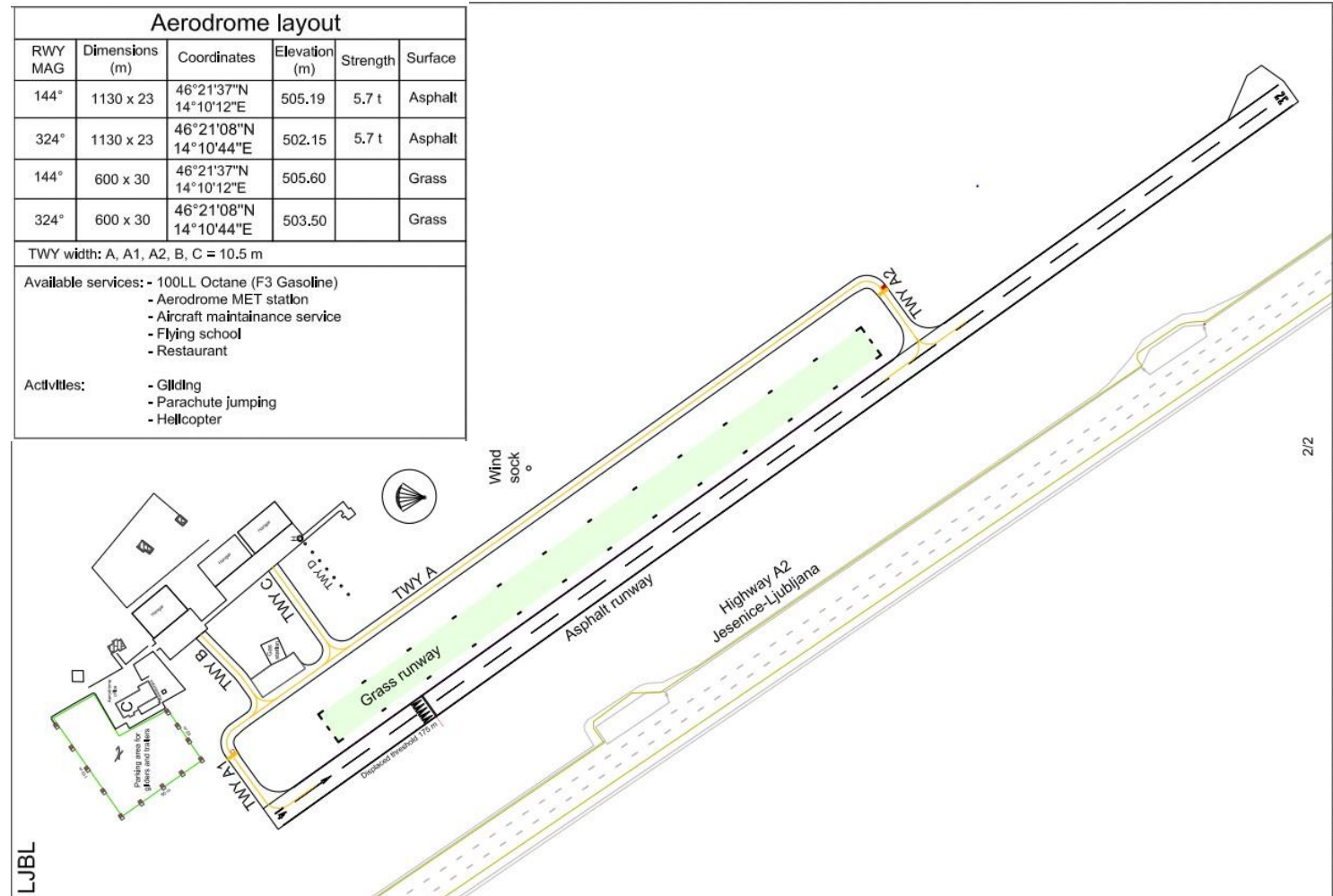
Airfield frequency / CH

**LESCE Radio CH 122.505**

Competition frequency/CH

**LESCE Competition CH 123.505**

Startline, Safety **CH 123.505**





## A. Documents to be presented by the pilot at registration

### 1. Pilot :

- Entry form (provided for the competition manager),
- Licence,
- Medical,
- Last page of logbook

### 2. Crew :

- Name and contact information of crew

### 3. Sailplane:

- Registration,
- ARC and AC insurance

Pilot will be asked to sign registration form confirming that they have all relevant documents

Pilots are requested to bring a country flag.







## B. Technical requirements - **Scrutieening**

Scruteering will be organised in club hangar

28.06.2024								
08:30	09:00	09:30	10:00	10:30	11:00	11:30	12:00	12:30
	14:00	14:30	15:00	15:30	16:00	16:30	17:00	17:30
29.06.2024								
08:30	09:00	09:30	10:00			16:30	17:00	

Table for inserting competition number will be available on „greenboard“ on club (red) hangar.





# C. General Flying Procedure

## 1. Map of the airfield

## 2. Units of measurement

- Height and altitude in meters
- Distance in km
- Speed in km/h
- Vertical speed in m/s
- Mass in kilograms
- Temperature in degrees Celsius
- The reference elevation of airfield is 504 meters

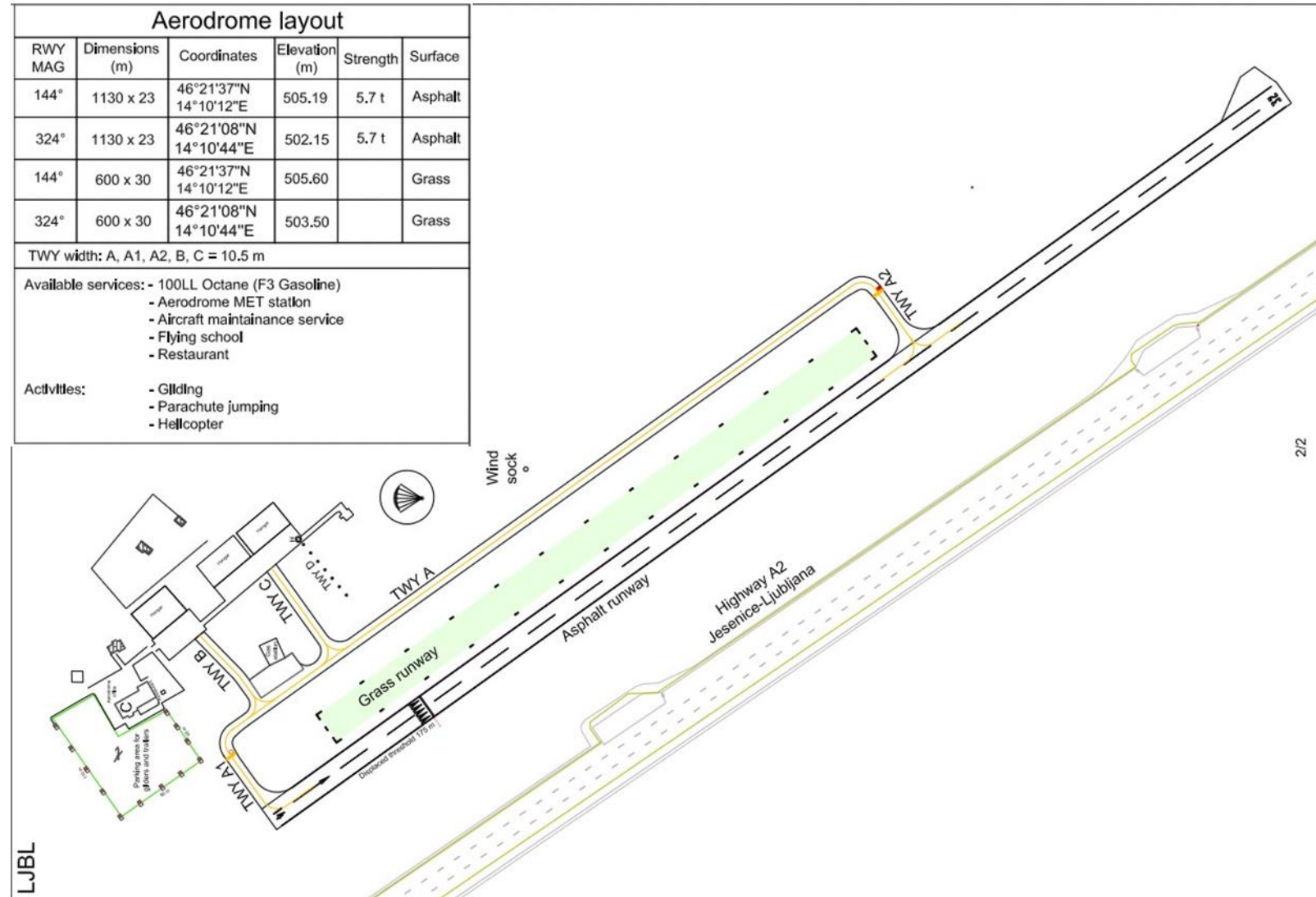
## 3. Single Frequency to be used

LESCE Radio CH 122.505

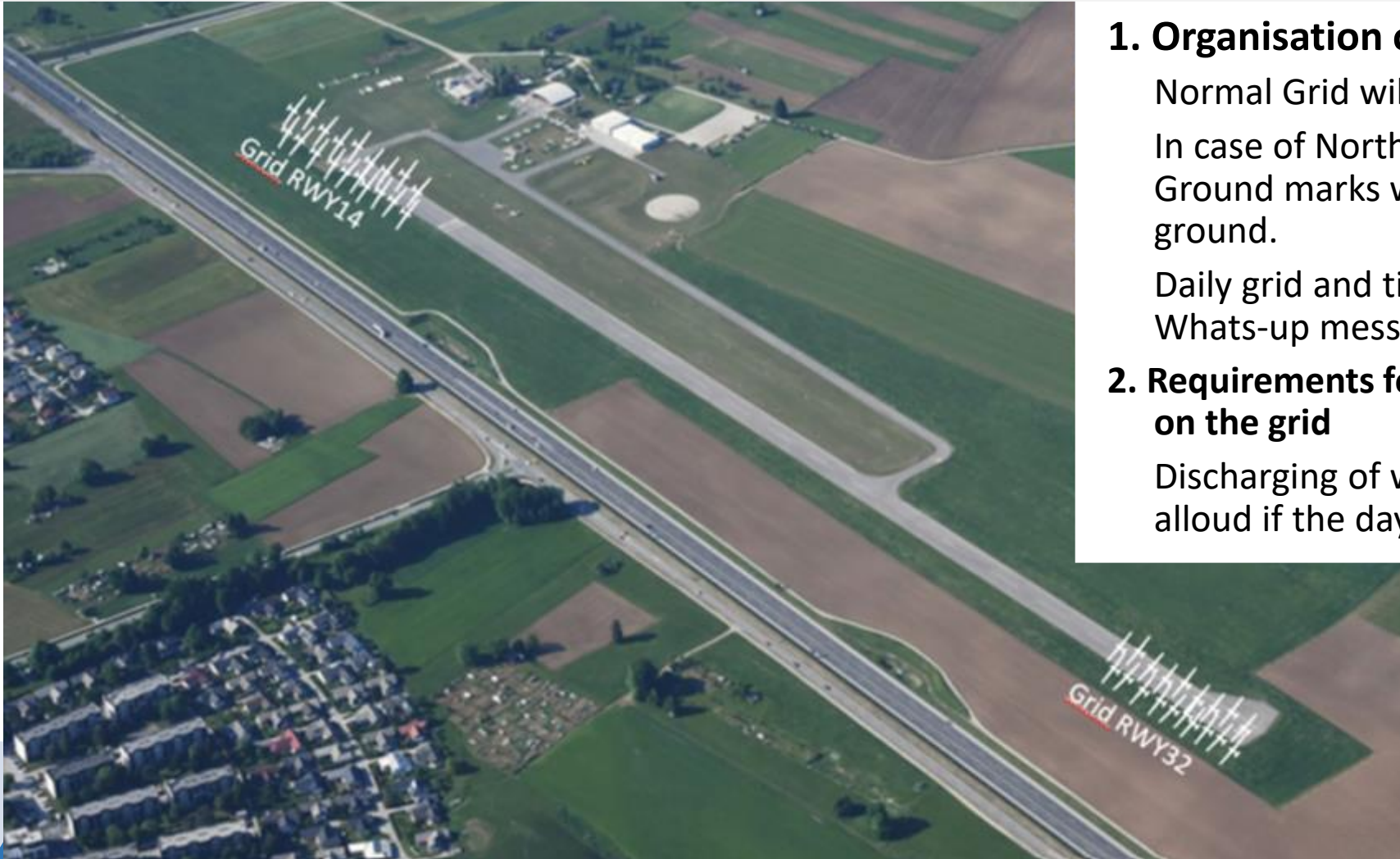
LESCE Competition CH 123.505

## 4. Carriage of tracking units

tba



## D. Gridding



### 1. Organisation of the grid

Normal Grid will be on asphalt RWY14

In case of North wind Grid / RWY32 will be in use.  
Ground marks with numbers will be placed on ground.

Daily grid and time limits will be announced by  
Whats-up message

### 2. Requirements for discharging of water ballasts on the grid

Discharging of water ballast on the grid is only  
alloud if the day is canceled.



## E. Launch procedure

### 1. Procedure for motor gliders if they are accepted

Selflaunching gliders are accepted – see *SGP Rules Series 12.0 v3*, para *7.2.2 Procedures for Motor Gliders*

### 2. Release areas

Two Release areas are published:

- a. SOUTH Release area and
- b. NORTH Release area

Release area in use will be daily announced at the briefing.

### 3. Release

Pilot shall release only after they reach the Release area and towing plane rock with the wings

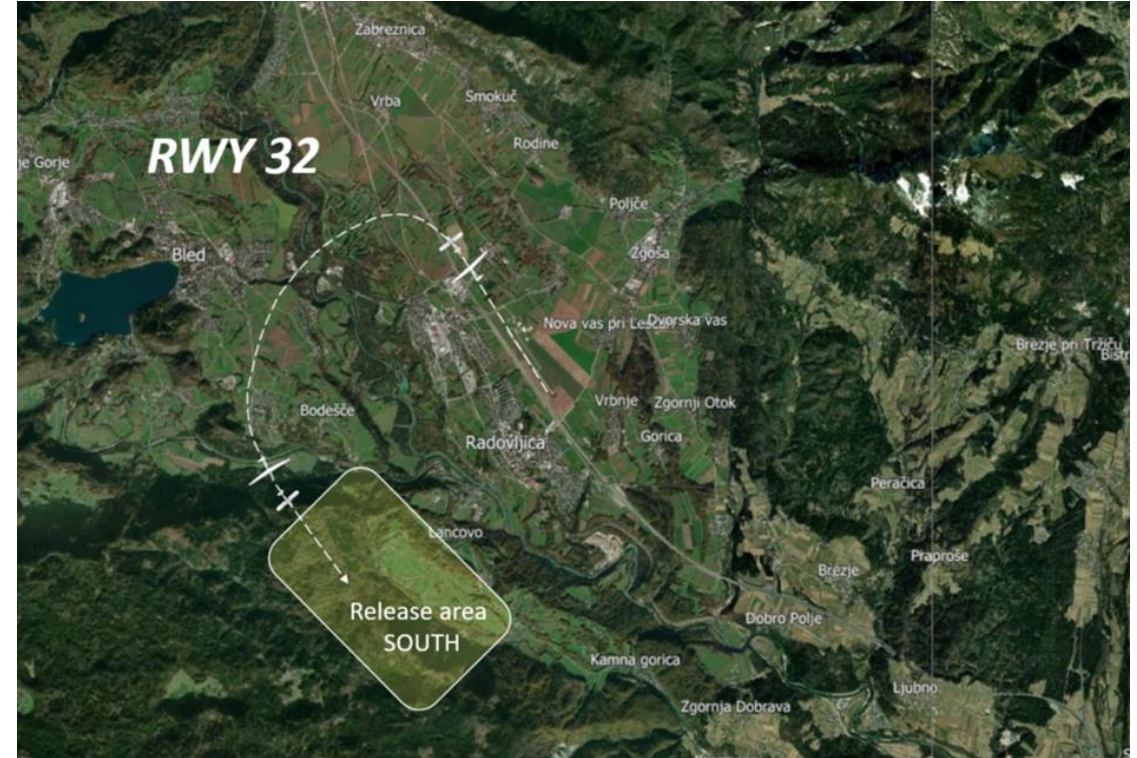
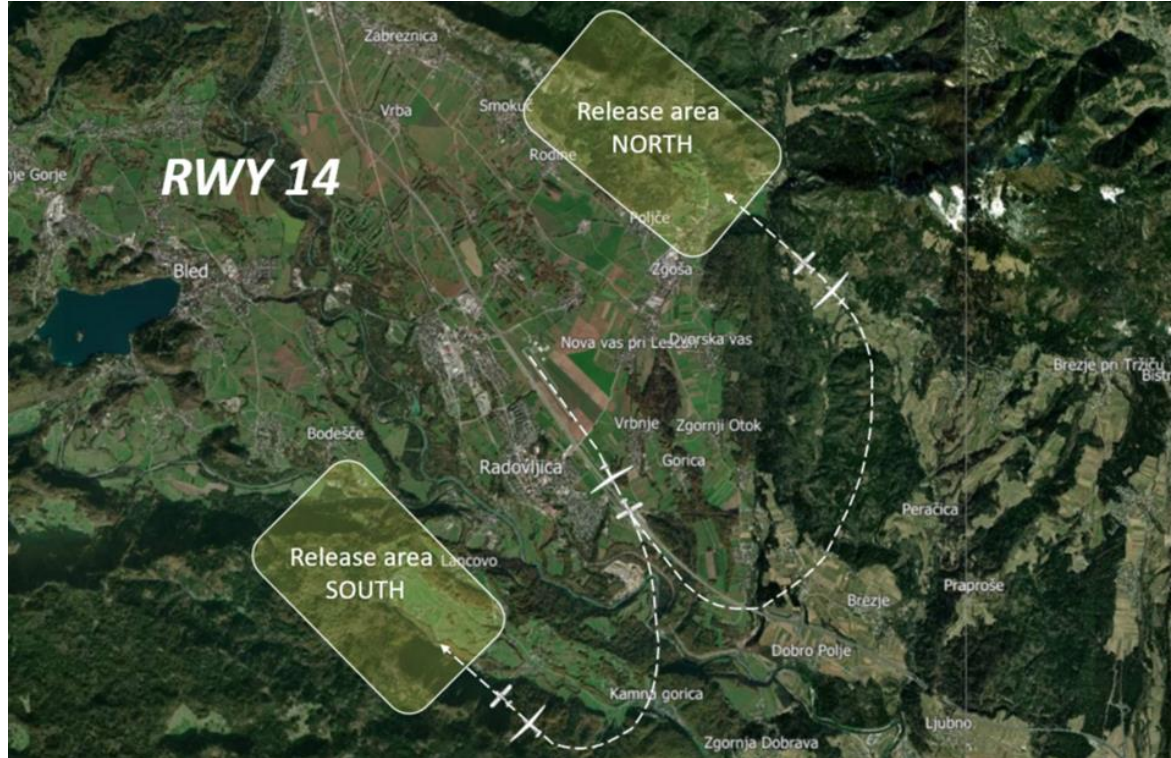
### 4. Re-lights (re-launch)

see *SGP Rules Series 12.0 v3*, para *7.2.1 Launching Procedures*





## E. Launch procedure - Release areas



Standard tow altitude

Selflaunching gliders must launch as directed by the Contest director in accordance with 7.2.2. The standard tow altitude will normally be 1100 AMSL (600 AGL). The tow altitude will be defined at the daily briefing.



## F. Finish Procedure

- The finish line is located at the beginning Threshold of Asphalt RWY 14
- Dimensions of the finish line is 250m left and right from the finish point.
- Mandatory arrival announcement is at :
  - a distance of **10km** to the finish line
  - Control point

### 1. Arrival announcement

Call **Lesce Competition** on **CH 123,505** with your comp.-**ID** at a distance of 10 km

### 2. Mandatory Reporting points

Call **Lesce Competition** on **CH 122,505** with your comp.-**ID** at the control point

### 3. Procedure for direct landings – see next slides

Being lower than the minimum altitude: Competitor will be penalized according to the SGP rules

### 4. Procedure for speed finishes – see next slides

### 5. Minimum altitude/height restrictions

From the control point to the finish line the Minimum altitude is 785 m AMSL (QFE LJBL 285m)

### 6. Landing

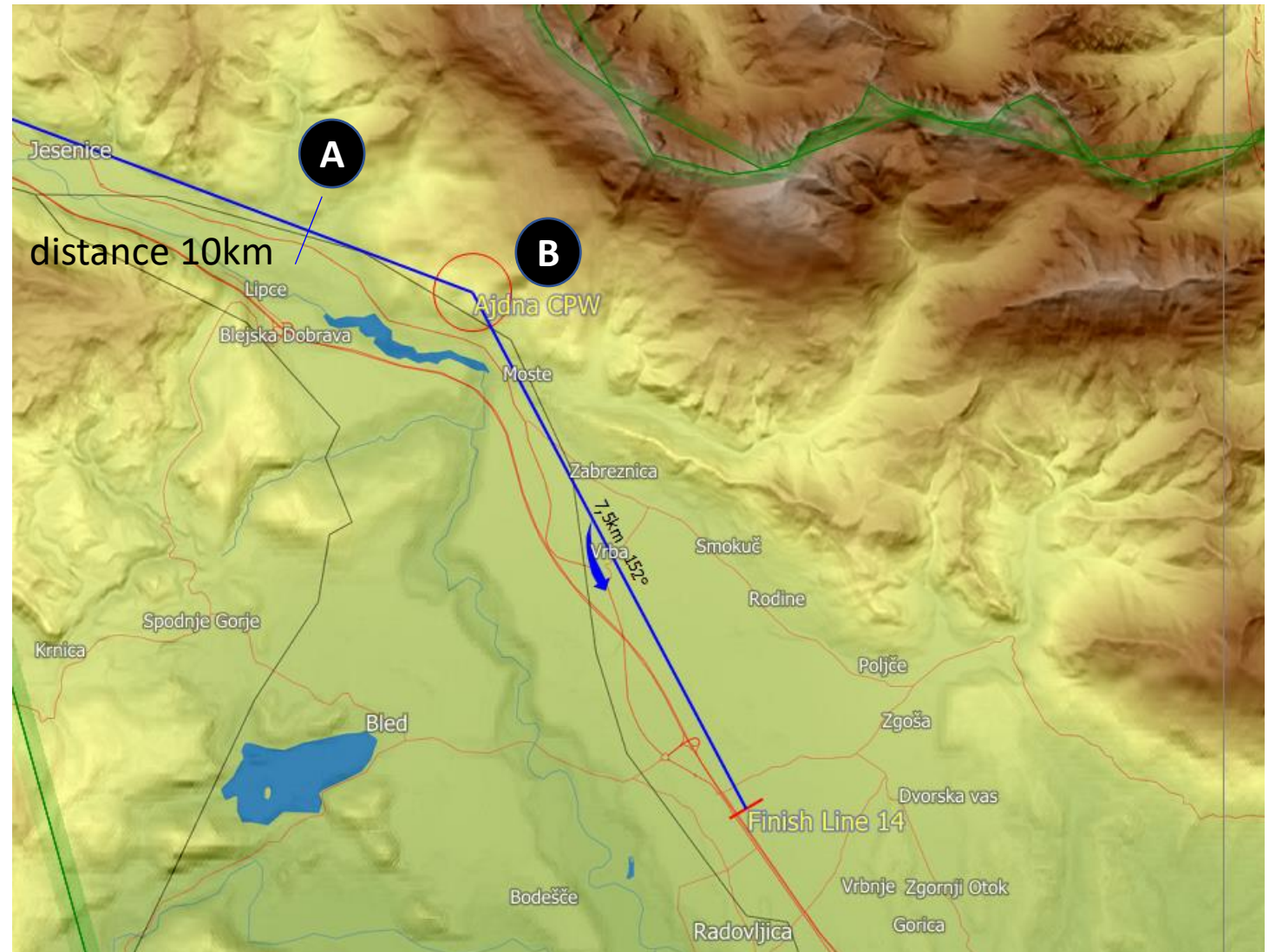




## F. Finish Procedure

Mandatory arrival announcement is at :

- A** a distance of **10km** to the finish line on CH 123.505
- B** Control point on CH 122.505

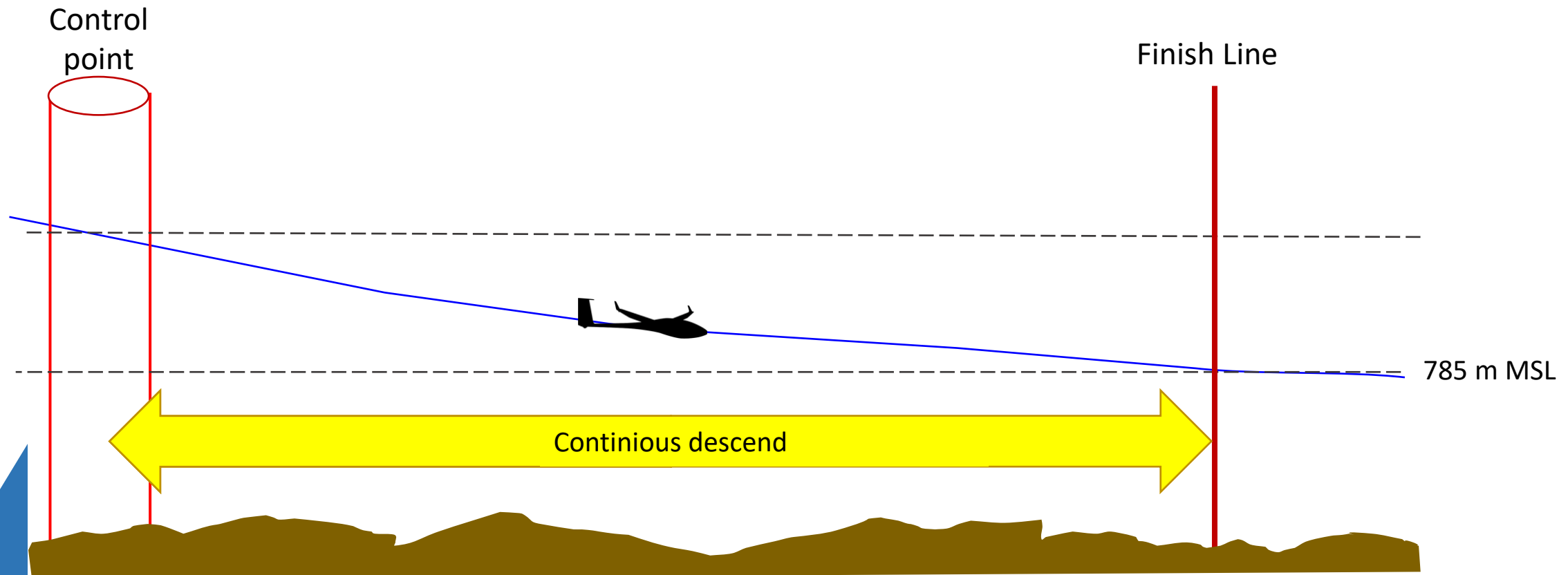




## F. Finish Procedure

### 5. Minimum altitude/height restrictions.

From the control point to the finish line the Minimum altitude is 785 m AMSL (QFE LJBL 285m).

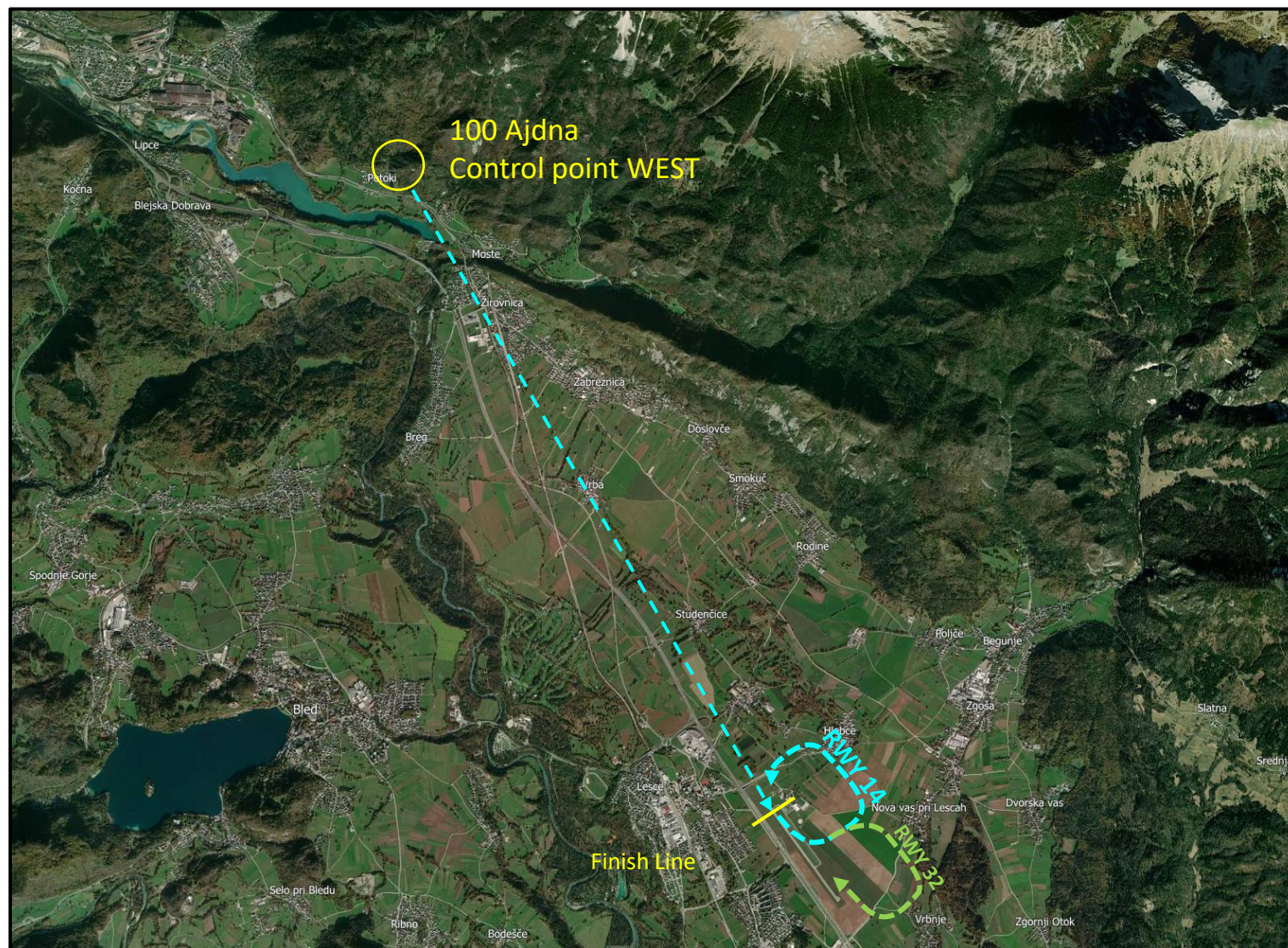


## F. Finish Procedure



### 5. Minimum altitude/height restrictions.

From the control point to the finish line the Minimum altitude is 785 m AMSL (QFE LJBL 285m).





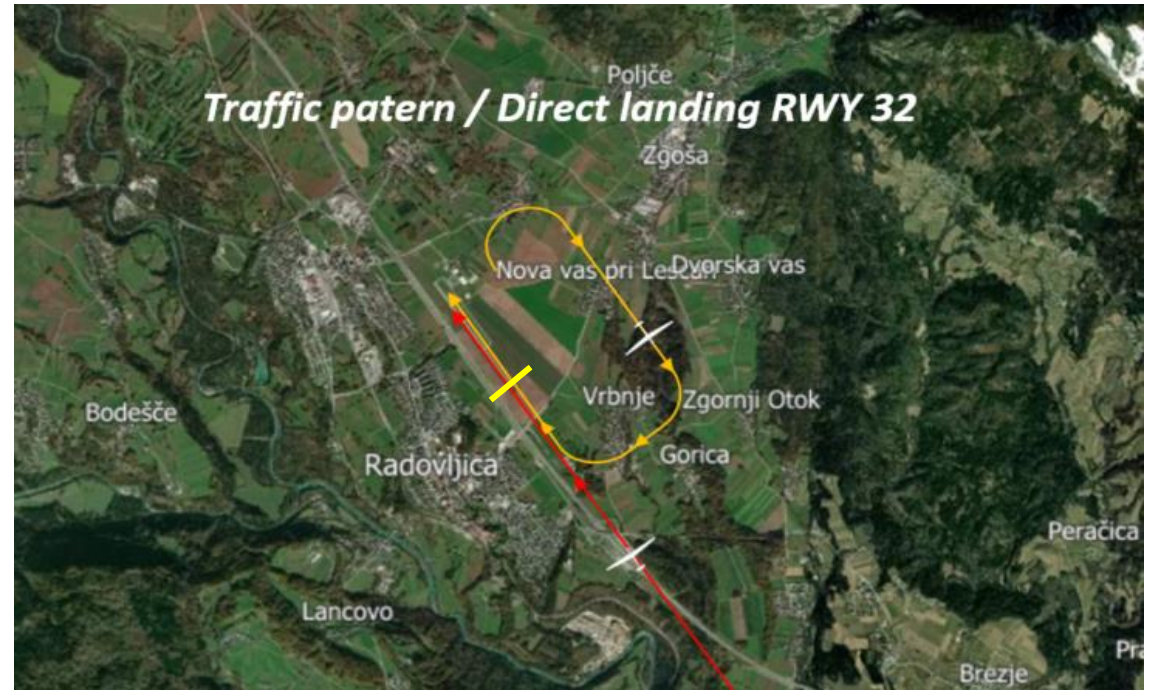
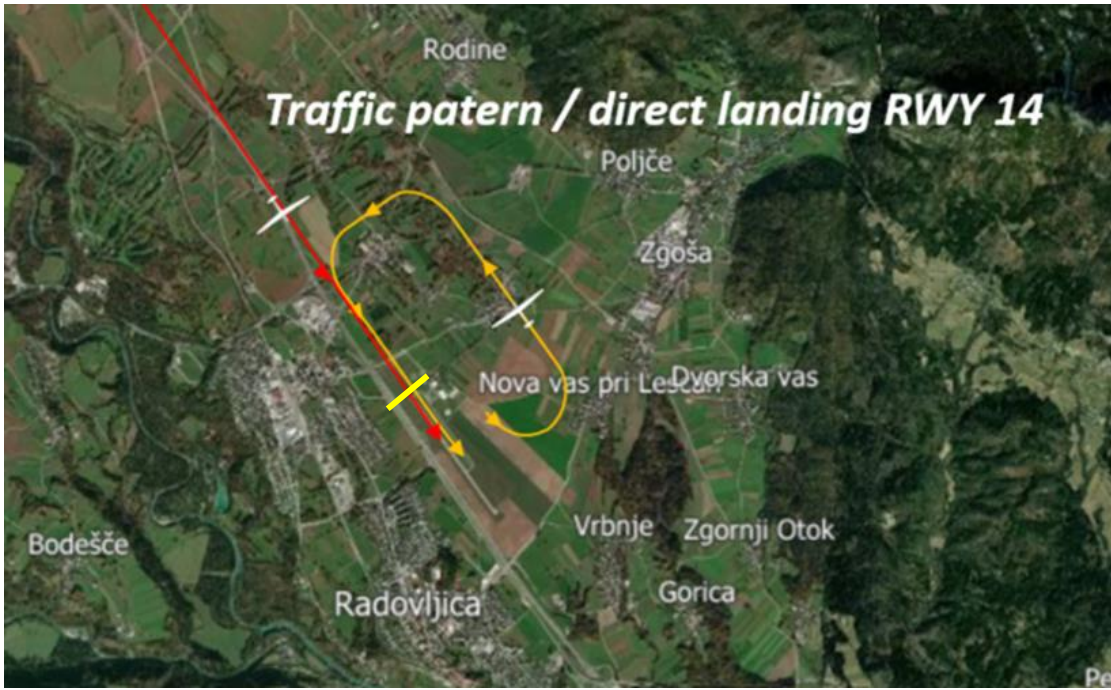
# F. Finish Procedure



3. Procedure for direct landings



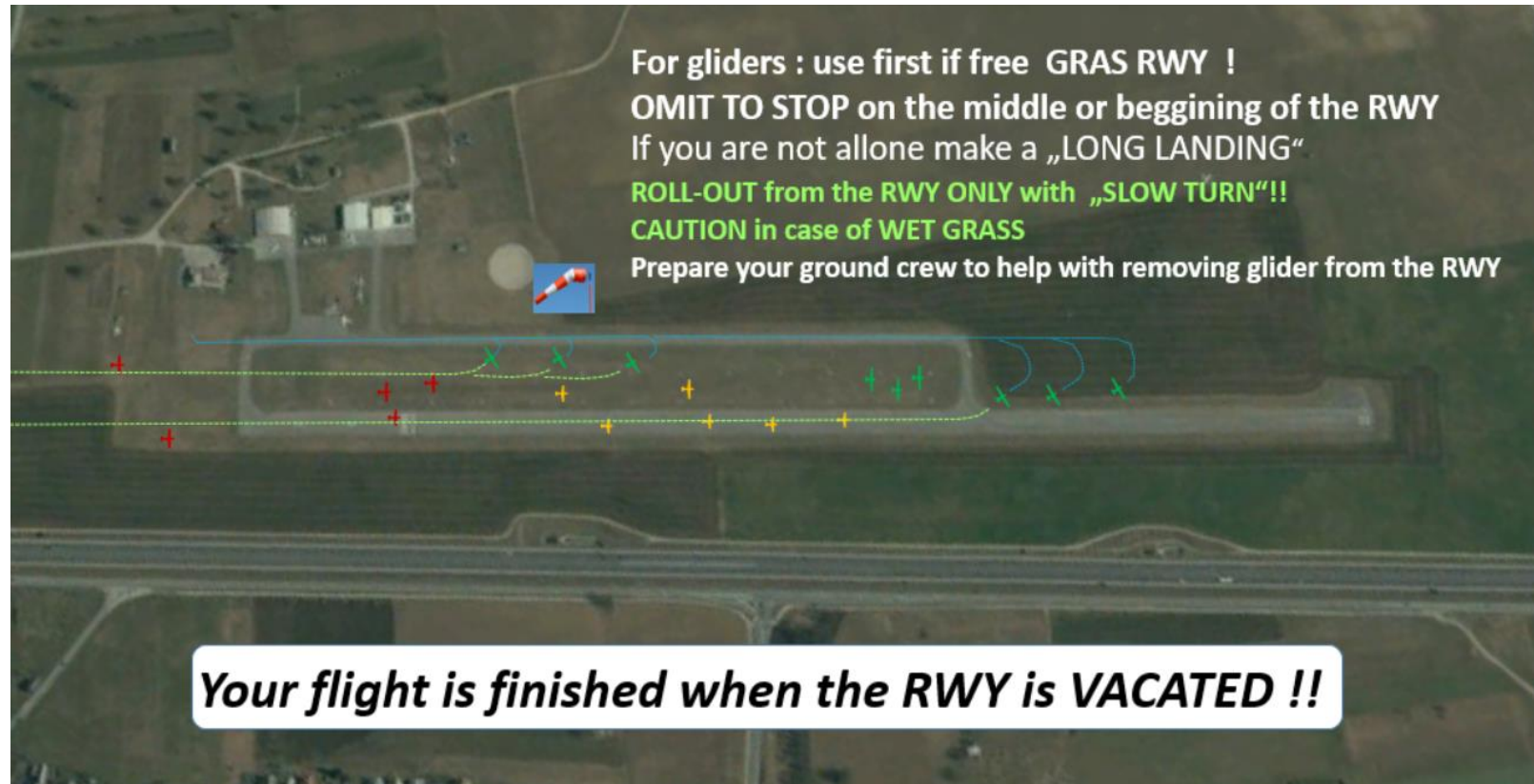
4. Procedure for speed finishes





## F. Finish Procedure

### ***Landing procedures – RWY14***



#### ***Landing on RWY 14***

In the case of more than one glider, it always lands in such a way that, after landing, other gliders can also land safely. in such cases, it is necessary to carry out your landing in such a way that after landing you are slightly directed to the edge of the grass area.

Special attention applies in case of wet grass RWY. Changes in direction should be gentle !!



## F. Finish Procedure

### ***Landing procedures – RWY32***



### ***Landing on RWY 32***

In the case of more than one glider, it always lands in such a way that, after landing, other gliders can also land safely. in such cases, it is necessary to carry out your landing in such a way that after landing you are slightly directed to the edge of the grass area.

Special attention applies in case of wet RWY. Changes in direction should be gentle !!



## G. Outlandings

1. Telephone number of the outlanding office
2. Outlanding form (information to be provided)

### *Outlanding information*

*As soon as possible after the landing, the pilot or the crew team must inform the organizer. It is recommended to send a WhatsApp private message or SMS to the organizer.*

*The Phone/WhatsApp number will be written on the task sheet.*





## I. Scoring

1. Delay for handling of flight documents
2. Handling of IGC files in electronic form via e-mail on [sgp@alc.si](mailto:sgp@alc.si)
3. Official elevation of the airfield in Meters : **505m**
4. In case of non completed task pilot on arrival has to announce that task is not completed...





## Weighing & limits

Glider	Wing area (m <sup>2</sup> )	Maximum allowed mass (kg)	Max achievable wing loading (kg/m <sup>2</sup> )	Max				
				@ 48 kg/m <sup>2</sup>	@ 49 kg/m <sup>2</sup>	@ 50 kg/m <sup>2</sup>	@ 51 kg/m <sup>2</sup>	@ 52 kg/m <sup>2</sup>
ASG 29-18m	10,50	600	57,14	504	515	525	536	546
ASW 28-18m	11,88	575	48,40	570	575	575	575	575
AS 33-18m	10,00	600	60,00	480	490	500	510	520
Discus 2C-18m	11,36	565	49,74	545	557	565	565	565
DG 800S-18m	11,81	525	44,45	525	525	525	525	525
JS 1-18m	11,25	600	53,33	540	551	563	574	585
JS 1-18m Evo	11,19	600	53,62	537	548	560	571	582
JS 3-18m	9,95	600	60,30	478	488	498	507	517
LAK 17A-18m	9,80	500	51,02	470	480	490	500	500
LAK 17B-18m	10,32	600	58,14	495	506	516	526	537
LAK 17C-18m	10,32	600	58,14	495	506	516	526	537
LS 6C-18m	11,40	525	46,05	525	525	525	525	525
LS 10-18m	11,45	600	52,40	550	561	573	584	595
Ventus 2C-18m	11,03	525	47,60	525	525	525	525	525
Ventus 2CX-18m	11,03	600	54,40	529	540	552	563	574
Ventus 3-18m	10,84	600	55,35	520	531	542	553	564