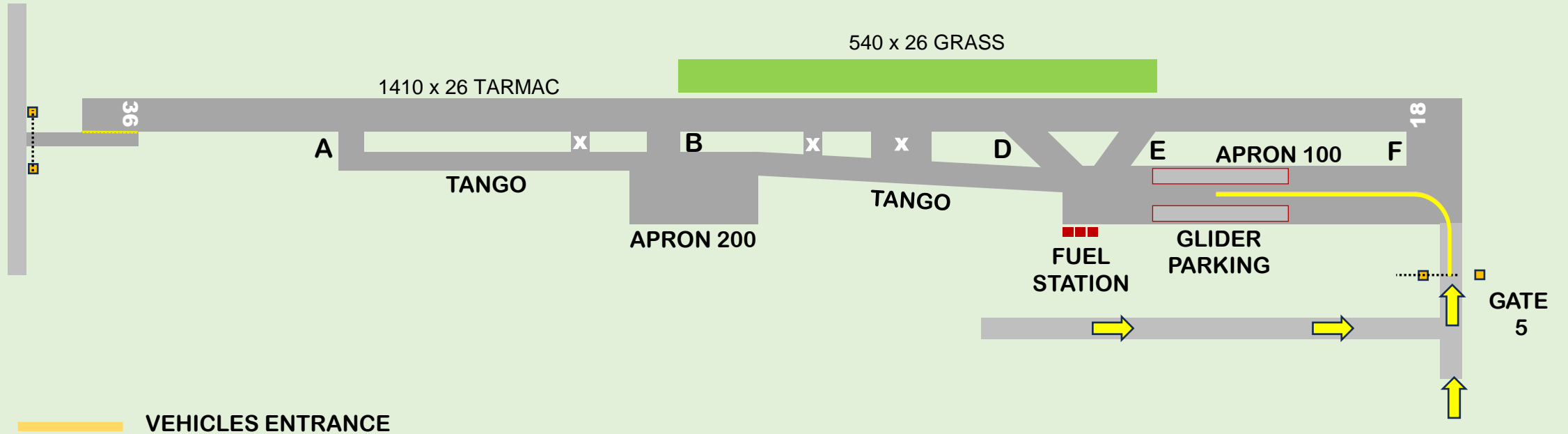




TROFEO CITTÀ DI L'AQUILA FERRUCCIO ZECCA



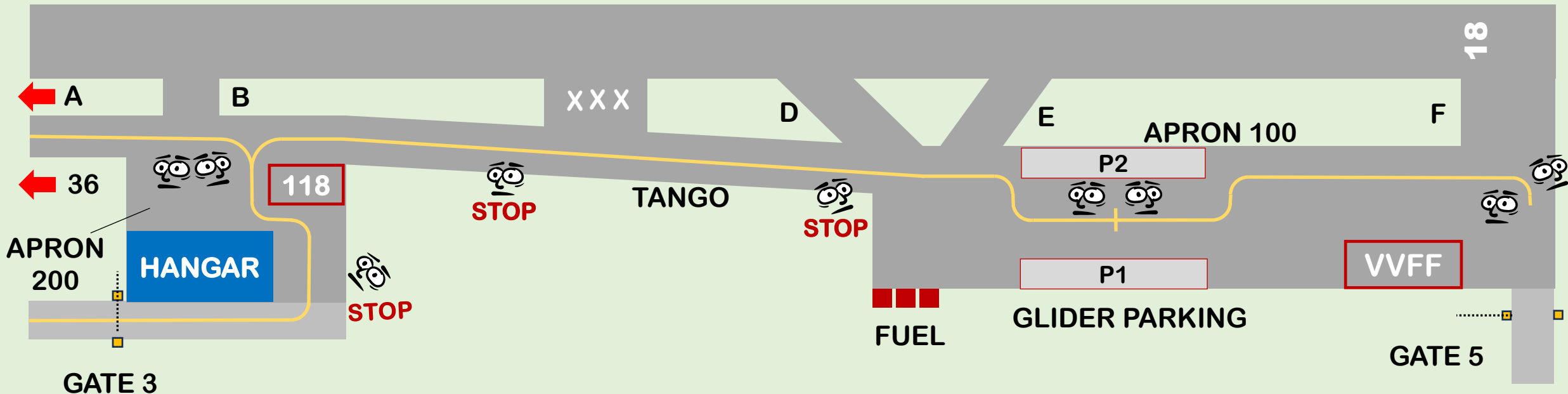
LIAP AIRPORT



ALL PRIVATE VEHICLES ENTERING THE AIRSIDE MUST HAVE THE RADIO ON (122.500)
NO PRIVATE VEHICLES MAY ENTER THE RUNWAY - NO PRIVATE VEHICLES MAY PARK IN THE APRON 200

LIAP AIRPORT

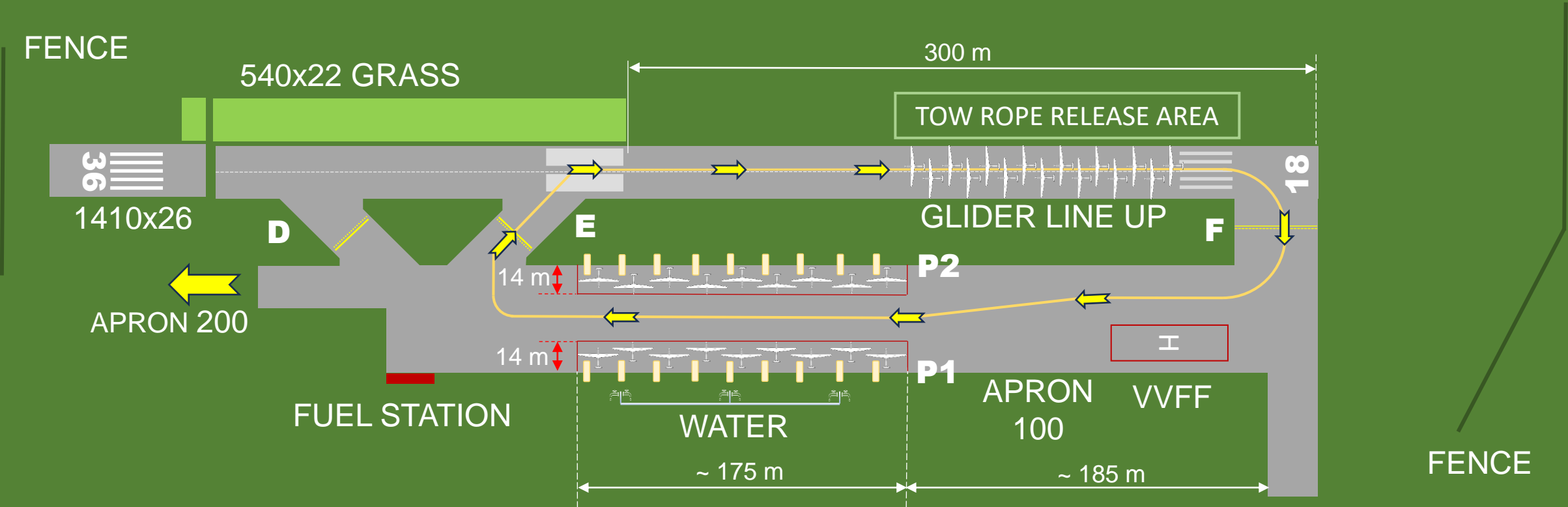
PATH OF VEHICLES TOWING GLIDERS



HELICOPTERS	VEHICLES
STARTING ENGINE	WAIT UNTIL TAKEOFF
LANDING	WAIT UNTIL ENGINE STOP

ALL PRIVATE VEHICLES ENTERING THE AIRSIDE MUST HAVE THE RADIO ON (122.500)
NO PRIVATE VEHICLES MAY ENTER THE RUNWAY - NO PRIVATE VEHICLES MAY PARK IN THE APRON 200

GLIDERS* PARKING AND LINE UP 18



APRON 100
 P1: 9 GLIDERS (COMPETITION ONLY)
 P2: 9 GLIDERS

— CAR TOWING THE GLIDER ROUTE

* GLIDERS WING SPAN MAX 20 m

GLIDERS* LINE UP 36

FENCE

TOW ROPE RELEASE AREA

TEMPORARY CAR PARKING

~ 260 m

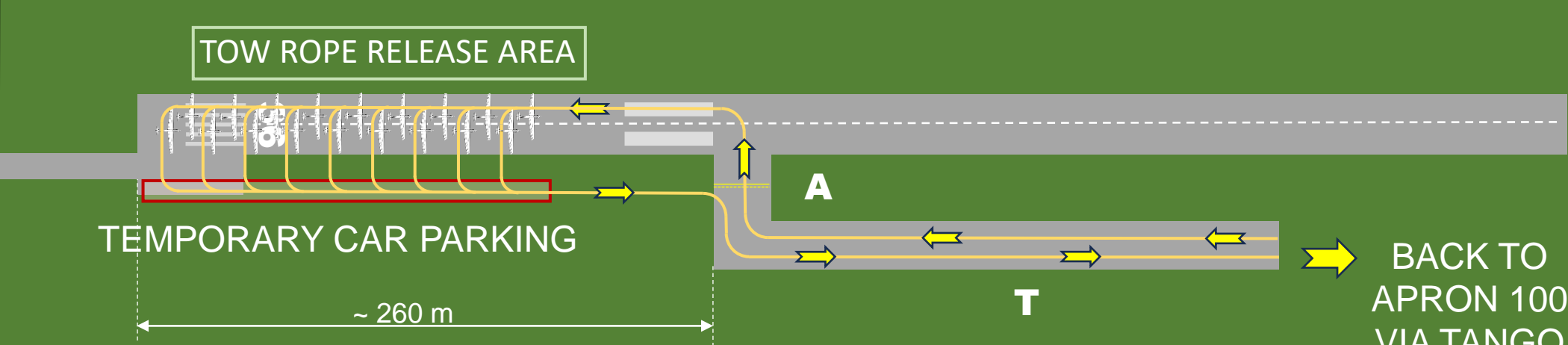
A

T

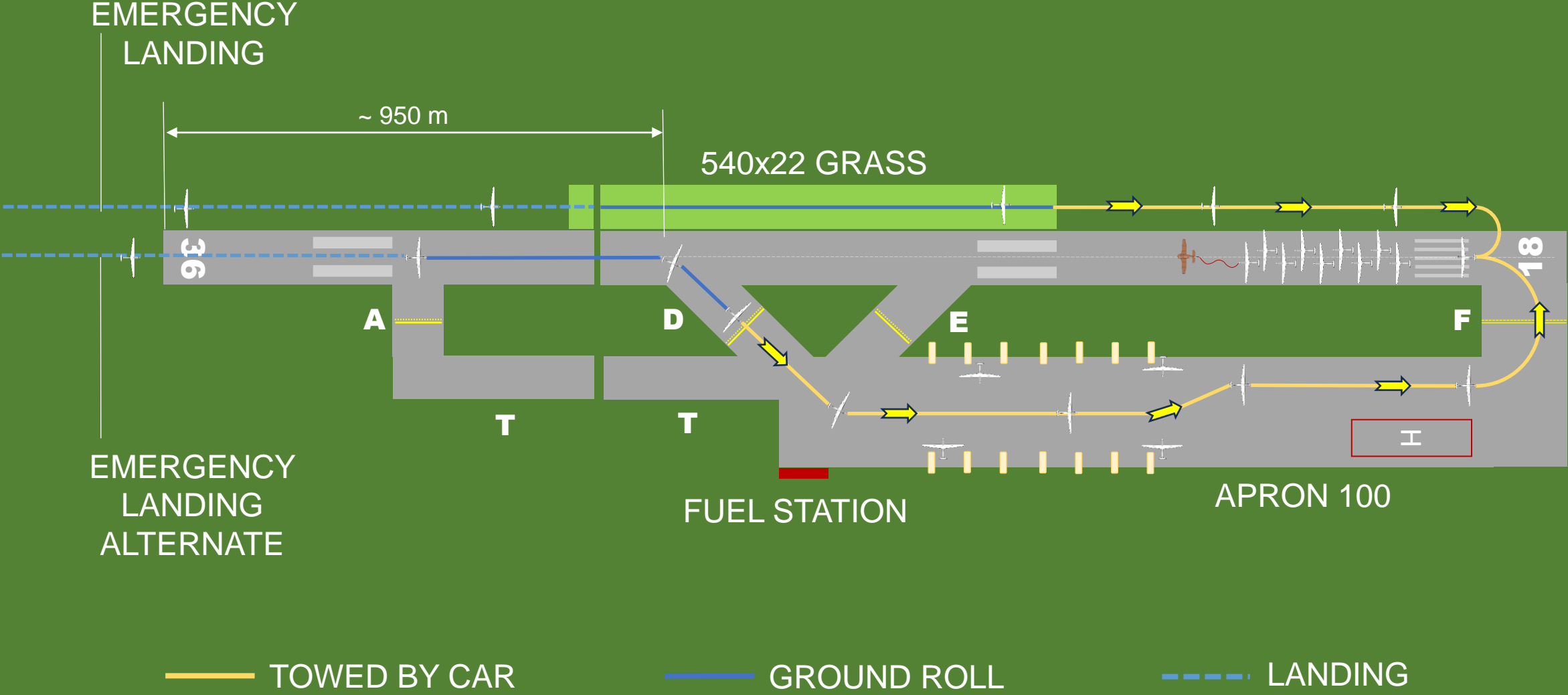
BACK TO
APRON 100
VIA TANGO

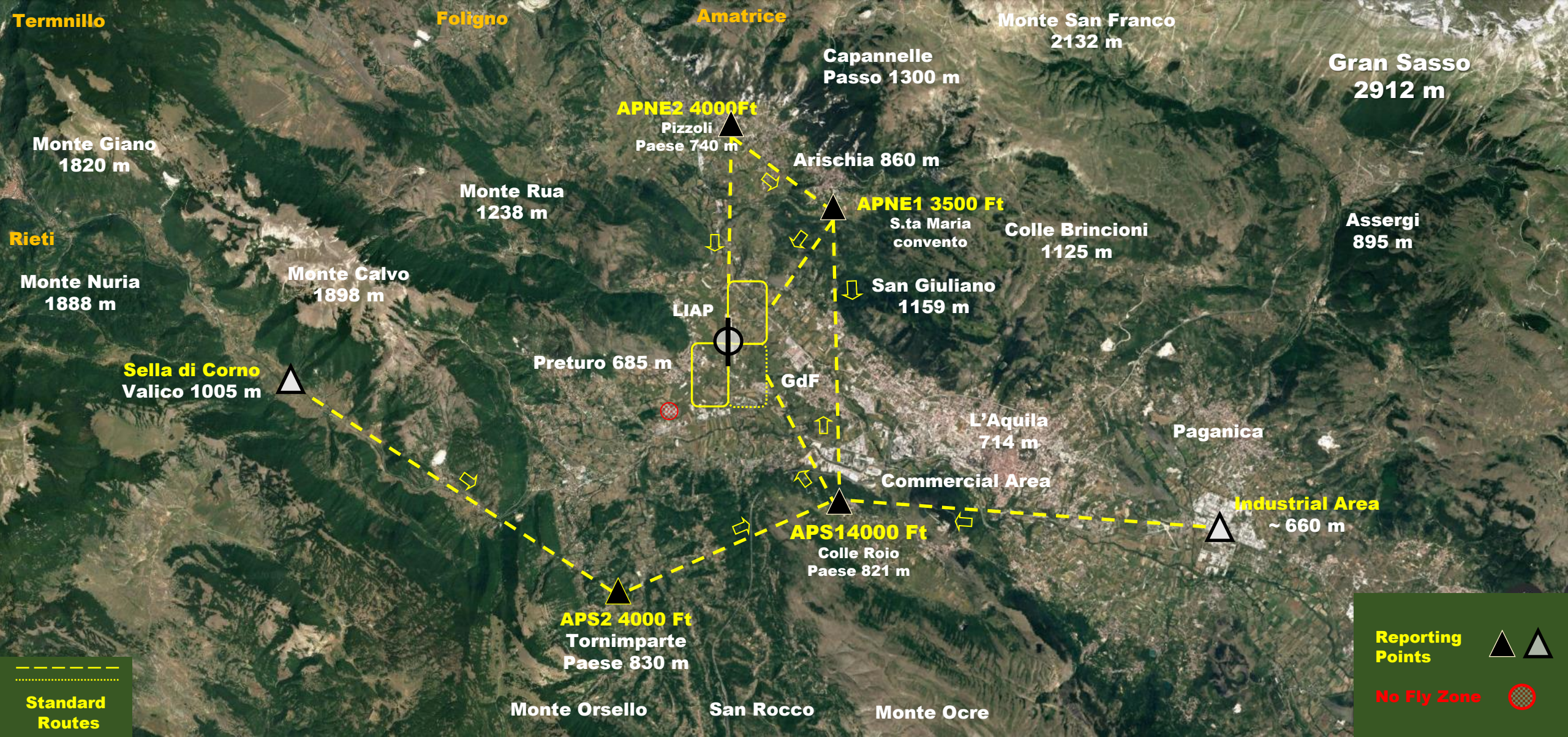
— CAR TOWING THE GLIDER ROUTE

* GLIDERS WING SPAN MAX 20 m



EMERGENCY LANDING





LIAP ARRIVAL

Elevation 2211 Ft – RWY 18-36 1410 x 26 m Tarmac – RWY 540 x 25 Grass – FRQ 122,500

LIAP
Aeroporto
dei Parchi
Preturo
L'Aquila

Engine a/c
Training Area

Relevant
Point

Gliders
Holding Area

Release
Area

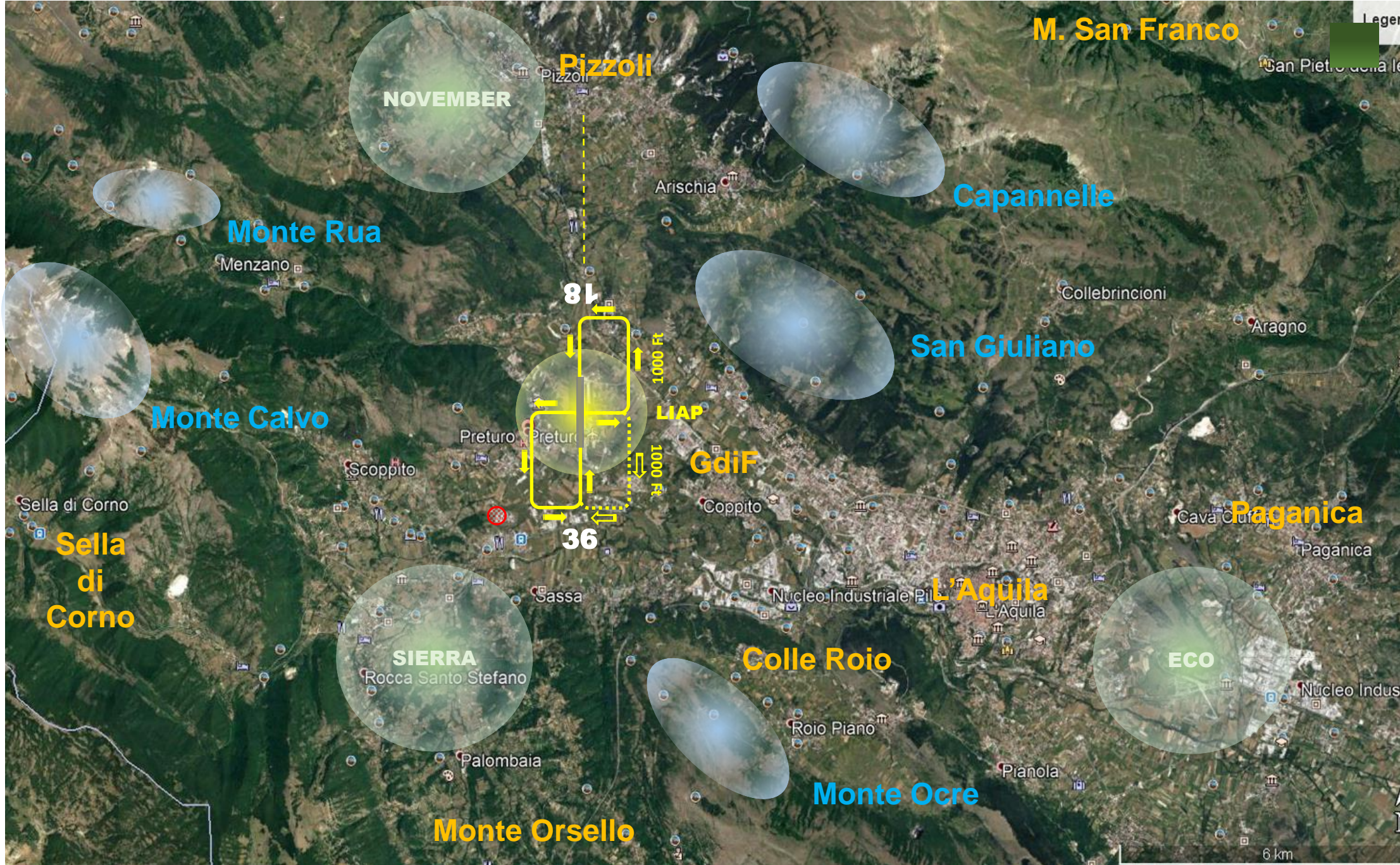
CIRCUIT



Engine A/Cs
(East)



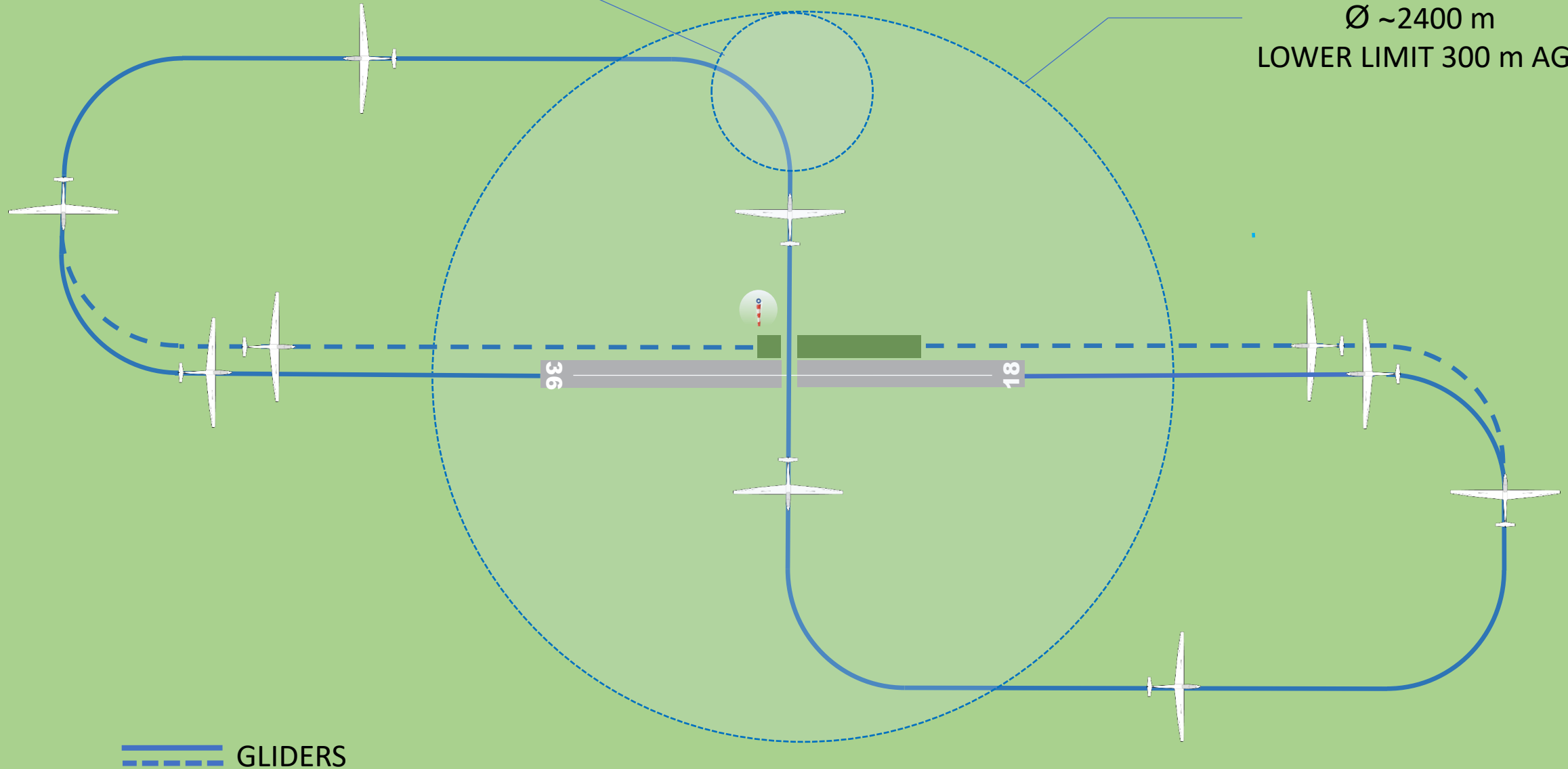
Gliders



«PRENOTAZIONE»

LIAP TRAFFIC CIRCUIT

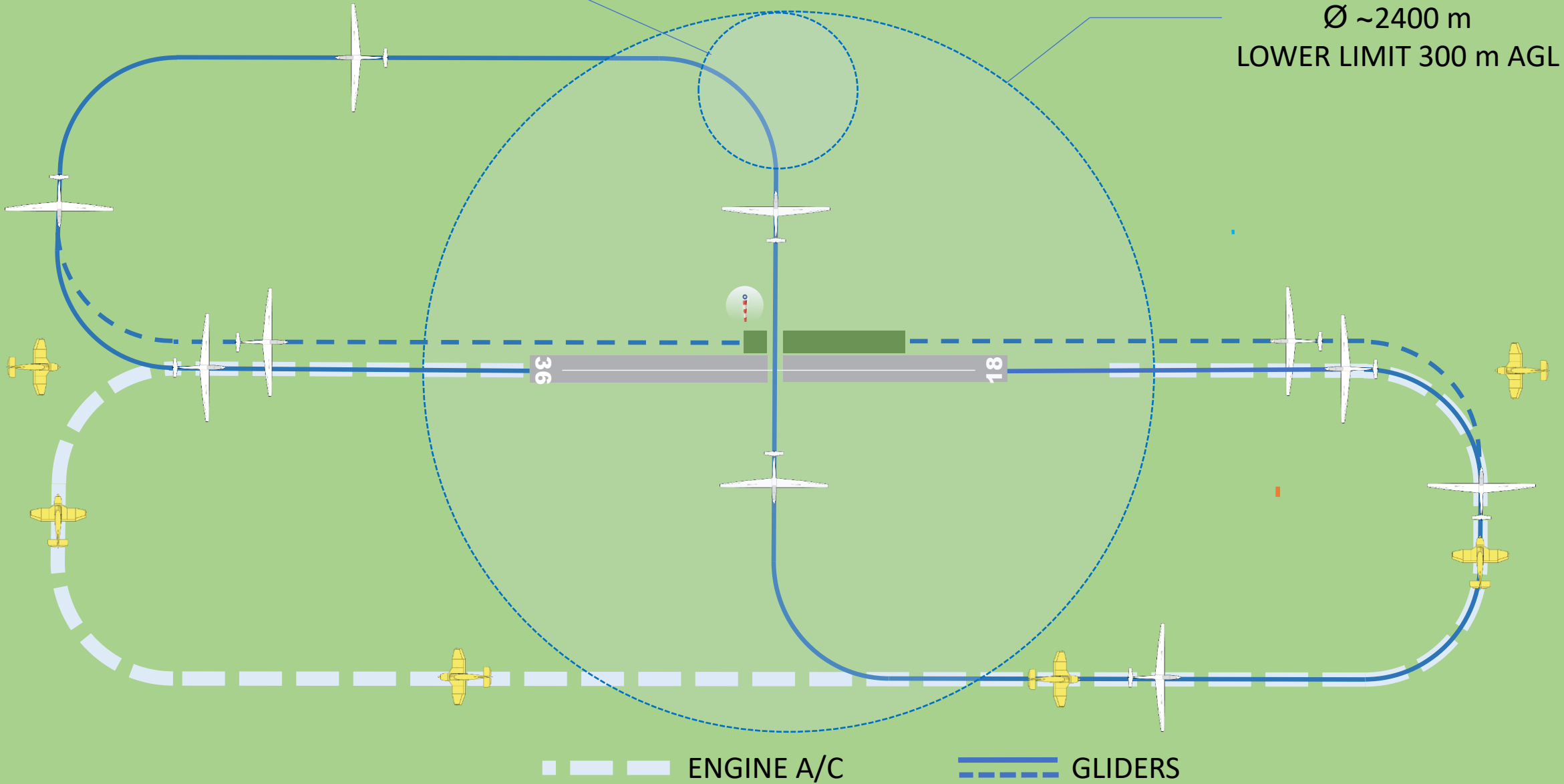
GLIDERS HOLDING AREA
Ø ~2400 m
LOWER LIMIT 300 m AGL



«PRENOTAZIONE»

LIAP TRAFFIC CIRCUIT

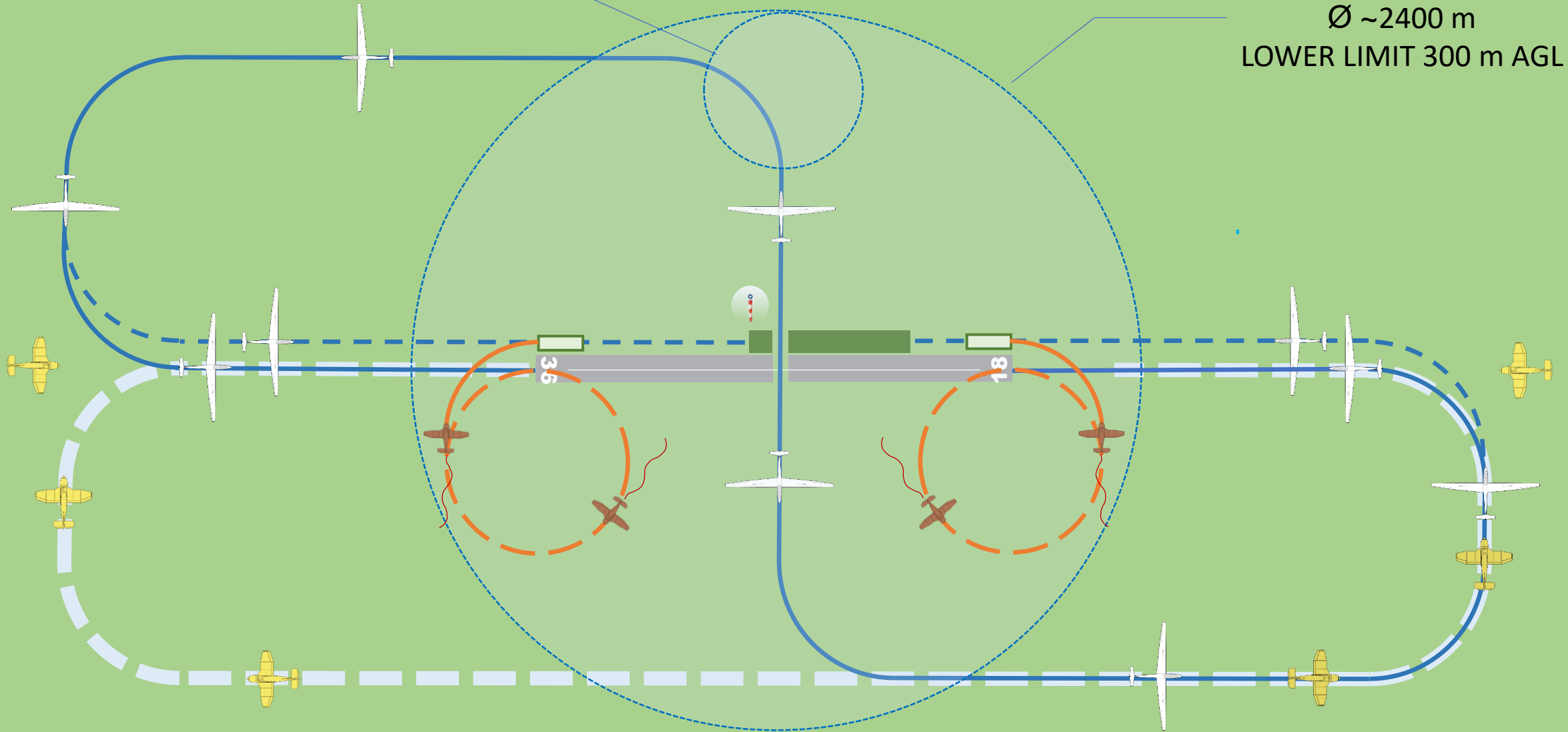
GLIDERS HOLDING AREA
Ø ~2400 m
LOWER LIMIT 300 m AGL



«PRENOTAZIONE»

LIAP TRAFFIC CIRCUIT

GLIDERS HOLDING AREA
Ø ~2400 m
LOWER LIMIT 300 m AGL



TOW ROPE RELEASE AREA

ENGINE A/C

GLIDERS

TUG A/C